



360 North Irby Street | Florence, SC 29501

Non-Profit
US Postage
PAID
Florence, SC
Permit 138

This health center is a Health Center Program grantee under 42 USC 254(b), a deemed Public Health Service employer under 42 USC 233(g)-(n), and an FTCA deemed facility.

Serving others, giving hope, changing lives.

SPRING 2026



Quarterly

- 2 CEO RECOGNITION + HIV TESTING
- 3 NEW PROVIDER + ECONOMIC REPORT
- 4 VETERANS EMERGENCY FUND + CCF
- 5 TOWN HALL + GROWING PAINS
- 6 TOGETHER HEALTHY + STREATER



HopeHealth CEO Receives Most Influential People Recognition



We are proud to share that HopeHealth CEO **Carl Humphries** has been named one of the B2B Pee Dee Business Magazine's 50 Most Influential People in the Pee Dee region.

Carl's recognition reflects his unwavering dedication to expanding access to quality health care, championing community partnerships, and leading HopeHealth with integrity and compassion. His work continues to advance the well-being of the families and communities we serve.

Pictured: Carl with his parents at the celebration gala.

I TEST.
hope-health.org

TAKE CONTROL - TEST FOR **HIV**
TAKE **PrEP** TO PREVENT **HIV**



Together Healthy



HopeHealth provider Madison Edwards, PA-C (L)

HopeHealth board member Edna Rodriguez (R)

At HopeHealth, we believe we are truly healthier together. As a Community Health Center, we are guided by a diverse board of leaders, including Spanish teacher Edna Rodriguez, whose service reflects our deep roots in the community we serve. That same spirit of collaboration defines our care. Our primary and specialty care providers and support staff work together to ensure every patient receives seamless, high-quality care. With multiple locations across five counties, HopeHealth serves nearly 85,000 patients throughout South Carolina. To learn more, visit hope-health.org.

Grits with Gents



Grits with Gents is a recurring event designed to provide men with a comfortable and open space to learn about, discuss, and ask questions regarding key health concerns. Attendees enjoy free breakfast and fellowship while participating in panel discussions led by a diverse group of experts, including patients, community leaders, clinical professionals, and mental health specialists. The event is held on Saturdays from 9-10am at the **Streater Community Center** (301 N. Dargan Street) in Florence. For more information, contact Terrance Legette at tlegette@hope-health.org.

NEW PROVIDERS



Carson Lee, LPCA

Carson Lee, LPCA, is a behavioral health consultant at the HopeHealth Medical Plaza in Florence. She earned a Bachelor of Science degree in Psychology and a Master of Science degree in Applied Psychology (Clinical/Counseling option) from Francis Marion University in Florence, South Carolina. Her clinical interests include trauma-focused therapy and assisting patients in achieving their goals.

HopeHealth Drives \$333M Economic Impact in SC

HopeHealth is not only an essential health care provider for thousands of South Carolinians but also a significant driver of economic growth, according to a recent study based on 2024 data. The report shows that HopeHealth had a **\$333M economic impact** and created **1,571 jobs** while achieving meaningful savings for South Carolina's health system and providing critical care services to vulnerable populations.

HopeHealth's economic impact was measured by:

- **\$182M** in direct spending on payroll and operations
- **\$150M** in indirect spending across its supply chain with local businesses
- Labor income from employees and partners in 2024

This economic activity created a ripple effect that generated additional jobs and economic growth, as well as \$38M in local, state, and federal tax revenues.

Last year, HopeHealth provided more than **270,000** clinical visits, with **15%** of patients being children and adolescents. By expanding access to care in underserved communities, HopeHealth achieved more than **\$90M** in savings for the state's overall health system, including **\$33M** in Medicaid savings, by managing chronic illnesses and reducing costly emergency room visits. With 21 sites strategically located across Florence, Clarendon, Aiken, Orangeburg, and Williamsburg Counties, HopeHealth provides a patient-centered medical home to patients of all ages, with a single goal in mind: improved health.

HopeHealth's 2024 Value and Impact Report was created in partnership with the **South Carolina Primary Health Care Association** and **CapitalLink**.





HopeHealth Veteran Services would like to thank Senator Mike Reichenbach and his wife, Charisse, for their generous donation to our Veteran Emergency Fund. This fund is used to support our Veterans and their families during times of financial crisis. If you know a Veteran who is facing financial hardship, or if you are interested in donating to this fund, please contact Graham Jordan at gjordan@hope-health.org.

compassionate care fund

HopeHealth patients may experience barriers to their health care needs that cannot be met directly by our providers. The Compassionate Care Fund exists to contribute to these unmet needs, such as the cost of specialty care and emergency assistance.



- \$20
 \$50
 \$100
 \$500
 \$1000
 Other \$ _____

I've enclosed a check payable to HopeHealth.

Please charge my credit card:

- Visa
 AMEX
 Master Card

Credit Card Number Expiration Date

Cardholder Name CVV Number

Signature

This gift is in memory of (name of deceased):

 This gift is a tribute to (name of individual):

to commemorate _____

Name: _____

Address: _____

City, State, Zip: _____

Phone: _____

Email: _____

HopeHealth is a 501(c)(3) nonprofit organization. Donations to HopeHealth are tax-deductible according to current IRS laws. Mail donations to: HopeHealth Community Relations, 360 North Irby Street, Florence, SC 29501.

Yes, I would like to make a donation to the HopeHealth Compassionate Care Fund.





TOWN HALL MEETING

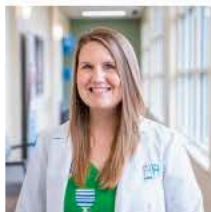
LEARN MORE ABOUT HOPEHEALTH WITH CARL HUMPHRIES, CEO



We are pleased to announce the 2026 HopeHealth Town Hall Series. Throughout the year, **CEO Carl Humphries** will host quarterly town hall meetings for patients and community members, designed to build awareness and deepen understanding of HopeHealth's mission, services, and unique role as a community health center. To learn more and register, visit our Facebook page or hope-health.org/events.

Growing Pains: Transitioning From Pediatric to Adult Care

Taylor Thompson, FNP-C
HopeHealth on Pine Needles Road



Getting your driver's license, heading off to college, entering the workforce – these are just a few of the milestones that may mark your journey from childhood into the adult world.

Included in this list is the transition from pediatric to adult health care. While this change may not be as exciting, continuity of care is incredibly important for your overall health!

Historically, pediatricians have provided care for patients from birth up to 18-21 years old. Pediatric providers are now encouraged to evaluate a patient's readiness to transition to an adult provider based on their unique needs. Pediatric providers often begin preparing their patients for health care independence by asking them direct questions about their health needs. Even though parental consent is required for procedures and immunizations if a patient is under 18, teens and young adults are often encouraged to attend appointments alone to foster confidence and comfort. Once a patient can manage their own health, they are ready to transition

to an adult primary care provider. Continuing care is essential for overall health and provides many benefits. A primary care provider will become familiar with your medical history, family history, and lifestyle choices to provide you with individualized preventive care, comprehensive health management, chronic disease management, and health education. Staying plugged in with a provider also increases accessibility, reducing your need to make costly visits to an urgent care or an emergency room, especially in non-urgent situations.

Another benefit of having a primary care provider is being able to get timely referrals to specialists when needed, like an orthopedic surgeon or chiropractor. Adult providers are also typically able to help patients navigate insurance and affordability concerns. While most insurance companies will allow coverage under a parent's plan until age 26, your provider may be able to help you navigate options for health care coverage following termination of childhood benefits.

Ultimately, having a provider and a health care home helps you stay up-to-date on primary prevention measures, while providing early detection and treatment of health issues and accessible, affordable health care. Staying in good health will ensure you can accomplish all the other adult milestones on your list! For more information, visit hope-health.org or call (843) 667-9414.